

OFFICE SUITE

Approx 800 sf
For Sale / Lease

1071 Worcester Rd, Suite 3A
Framingham, MA



SPACE FOR SALE / LEASE

AVAILABLE (APPROX SF):

800 sf

USES: Office Use

OFFERED FOR SALE OR LEASE:

Sale: \$189,000

Lease: \$1700/mo + expenses

NEARBY TENANTS: Mobil and Circle K, Unique Dental, Stop & Shop, Nova Farms, McGovern Ford, Trader Joe's, Whole Foods, 99 Restaurant, Samba Steak & Sushi, and much more.

The information contained herein has been obtained through sources deemed reliable by JMJ Commercial Realty, Inc., but cannot be guaranteed for its accuracy. We recommend to the Buyer or Tenant that any information, which is of special interest, should be obtained through independent verification.

LOCATION:

1071 Worcester Road is located on Route 9 West, across from FSU with Mass Pike entrance nearby.

SUMMARY:

Approx 800 sf commercial condo located on Route 9 West, across from Framingham State University. Elevator building, featuring 4 private offices and waiting room area. Excellent parking and convenient location. Available for sale or lease. Ideal for professional office user looking to purchase instead of leasing. Call for more information!

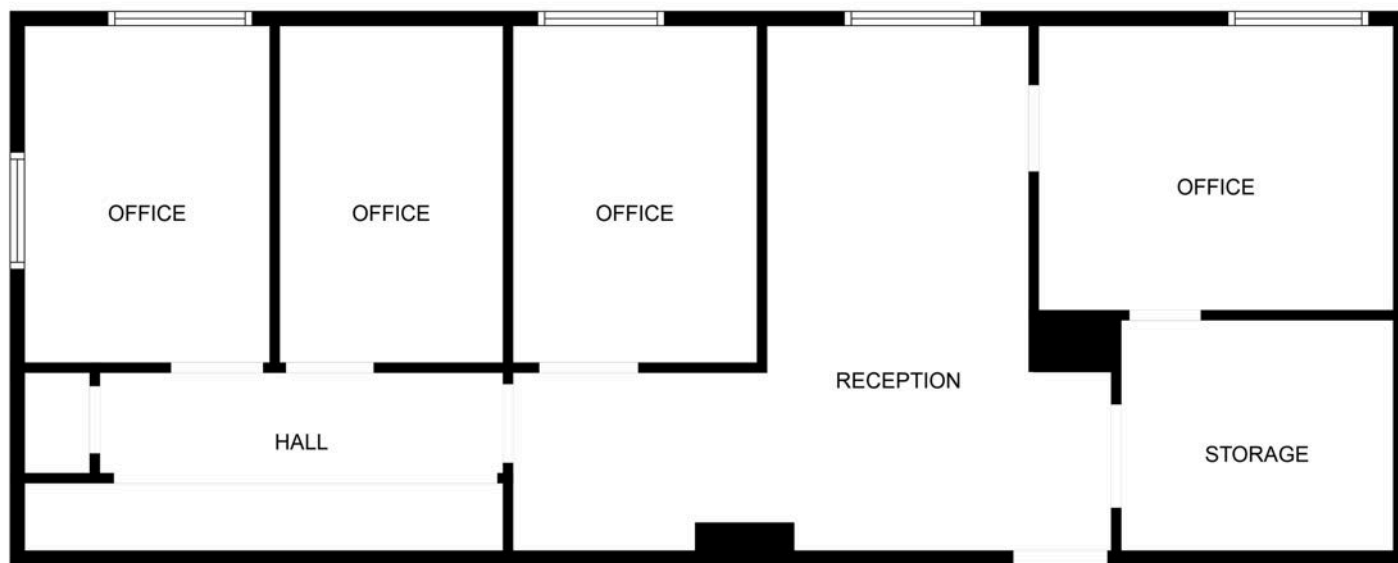


JMJ Commercial Realty
935 Great Plain Avenue #261
Needham, MA 02492
www.jmj-cre.com

Josh Seadia
Principal
617-605-5674
josh@jmj-cre.com

Approx 800 sf Office Suite - 1071 Worcester Rd, Suite 3A, Framingham

FLOOR PLAN



FLOOR PLAN CREATED BY CUBICASA APP. MEASUREMENTS DEEMED HIGHLY RELIABLE BUT NOT GUARANTEED.

The information contained herein has been obtained through sources deemed reliable by JMJ Commercial Realty, Inc., but cannot be guaranteed for its accuracy. We recommend to the Buyer or Tenant that any information, which is of special interest, should be obtained through independent verification.



JMJ Commercial Realty
935 Great Plain Avenue #261
Needham, MA 02492
www.jmj-cre.com

Josh Seadia
Principal
617-605-5674
josh@jmj-cre.com