

# RETAIL SUITE

Approx 1,551 sf  
For Sub-Lease

1148 Centre St,  
Newton, MA



S  
P  
A  
C  
E  
  
F  
O  
R  
  
S  
U  
B  
-  
L  
E  
A  
S  
E

## AVAILABLE (APPROX SF):

1,551 sf

## USES:

Private retail suite available for sub-lease inside Dellaria Salons in Newton Centre. Ideal for massage, beauty spa or other complimentary user. **No hair or nail salon use.**

## FOR SUB-LEASE:

Asking: \$5,000/mo + expenses

## TENANT AT PROPERTY:

 Dellaria Salons

The information contained herein has been obtained through sources deemed reliable by JMJ Commercial Realty, Inc., but cannot be guaranteed for its accuracy. We recommend to the tenant that any information, which is of special interest, should be obtained through independent verification.

## LOCATION:

1148 Centre Street is located just moments from the bustling Newton Centre and the Newton Centre T stop.

## SUMMARY:

Approx 1,551 sf of retail space available for sub-lease in Newton Centre! Suite is currently built-out for massage use. Excellent location for a variety of beauty spa uses, that would be complementary with long established and busy Dellaria Salons location. Call for more info!

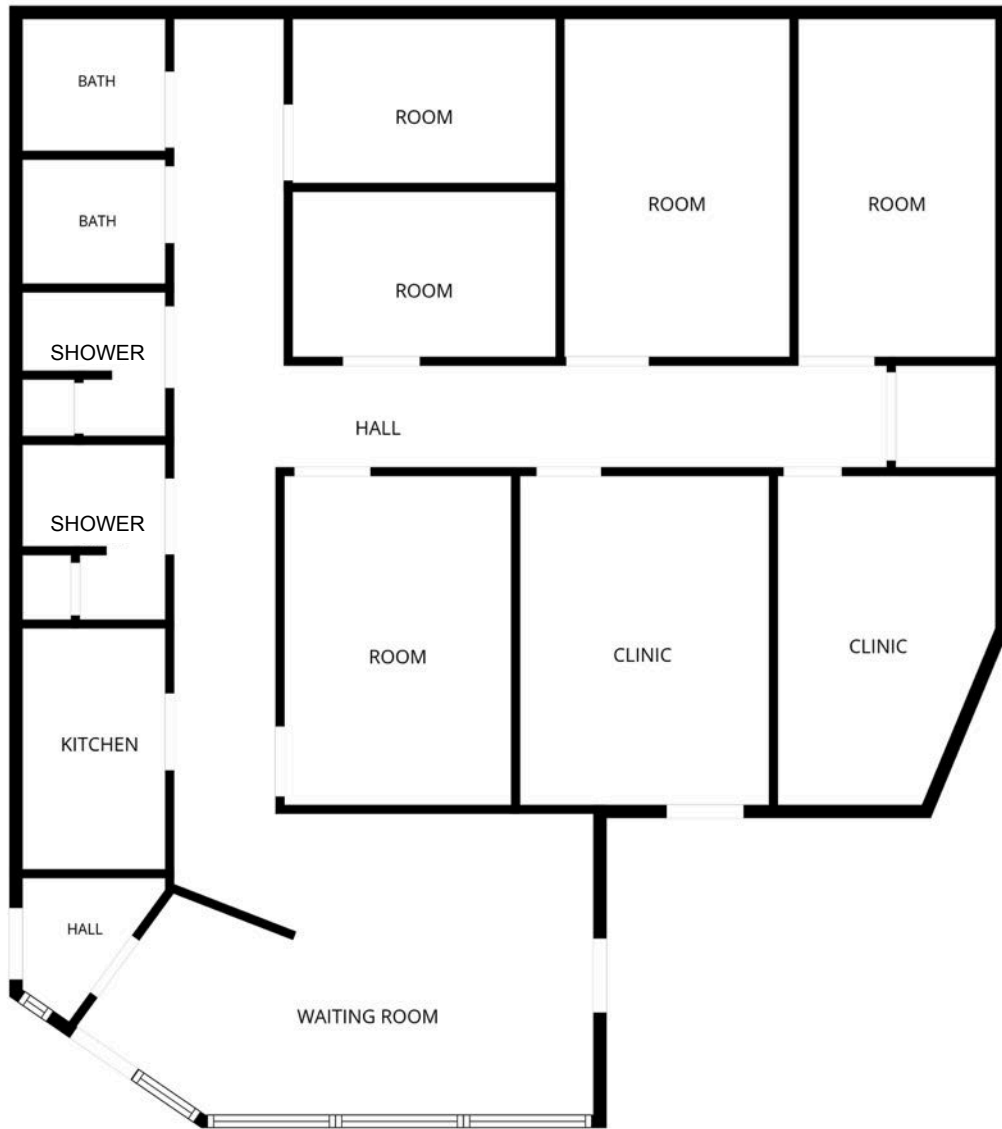
**Note: No hair or nail salon use.**



**JMJ Commercial Realty**  
935 Great Plain Avenue #261  
Needham, MA 02492  
[www.jmj-cre.com](http://www.jmj-cre.com)

**Josh Seadia**  
Principal  
617-605-5674  
[josh@jmj-cre.com](mailto:josh@jmj-cre.com)

## FLOOR PLAN - APPROX 1,551 SF



FLOOR PLAN CREATED BY CUBICASA APP. MEASUREMENTS DEEMED HIGHLY RELIABLE BUT NOT GUARANTEED.

The information contained herein has been obtained through sources deemed reliable by JMJ Commercial Realty, Inc., but cannot be guaranteed for its accuracy. We recommend to the tenant that any information, which is of special interest, should be obtained through independent verification.



**JMJ Commercial Realty**  
935 Great Plain Avenue #261  
Needham, MA 02492  
[www.jmj-cre.com](http://www.jmj-cre.com)

**Josh Seadia**  
Principal  
617-605-5674  
[josh@jmj-cre.com](mailto:josh@jmj-cre.com)