

MEDICAL OFFICE SUITES

789 - 3,156 SF of Medical Office Space
For Lease or Sale

130 County Rd
Ipswich, MA



AVAILABLE (APPROX SF):

789 - 3,156 SF consisting of four (4) medical suites

USES:

Medical or general office commercial condos

OFFERED FOR LEASE OR SALE (SUITES B, C, G, I):

For Lease: \$12/sf + NNN

For Sale: \$50,000 per unit

NEARBY TENANTS:

TD Bank, Subway, Market Basket, CVS,
Cumberland Farms and the YMCA.

The information contained herein has been obtained through sources deemed reliable by JMJ Commercial Realty, Inc., but cannot be guaranteed for its accuracy. We recommend to the tenant or buyer that any information, which is of special interest, should be obtained through independent verification.

LOCATION:

130 County Rd is located adjacent to Route 1A, close to downtown Ipswich and approx 1.3 miles to the Ipswich commuter rail.

SUMMARY:

Unique opportunity to lease or purchase up to four (4) medical office condos, each approx 789 sf. Units previously occupied by North Shore Physicians Group and are terrific for various medical or potential general office use. Ample parking with 3 of 4 units located on the 1st floor. Call for more details!

S
P
A
C
E

F
O
R

L
E
A
S
E
/
S
A
L
E



JMJ Commercial Realty
935 Great Plain Avenue #261
Needham, MA 02494
www.jmj-cre.com

Josh Seadia
Principal
617-605-5674
josh@jmj-cre.com

789 - 3,156 sf of Medical Suites for Lease / Sale - 120 County Rd, Ipswich MA

PROPERTY PHOTOS PAGE 1



JMJ Commercial Realty
935 Great Plain Avenue #261
Needham, MA 02494
www.jmj-cre.com

Josh Seadia
Principal
617-605-5674
josh@jmj-cre.com

789 - 3,156 sf of Medical Suites for Lease / Sale - 120 County Rd, Ipswich MA

PROPERTY PHOTOS PAGE 2



JMJ Commercial Realty
935 Great Plain Avenue #261
Needham, MA 02494
www.jmj-cre.com

Josh Seadia
Principal
617-605-5674
josh@jmj-cre.com

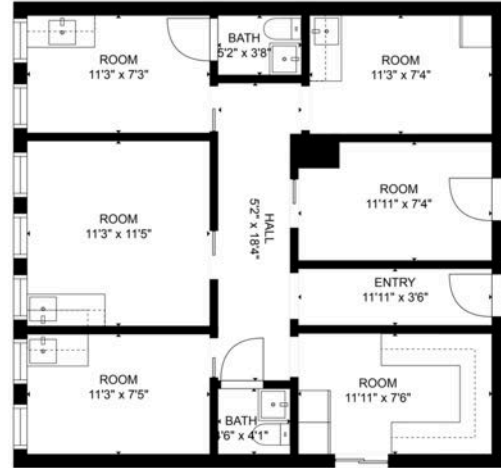
FLOOR PLANS (SUITES B, C, G AND I)

SUITE B FLOOR PLAN



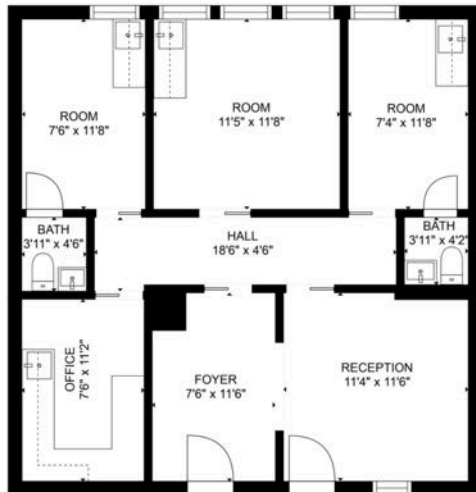
GROSS INTERNAL AREA
FLOOR 1: 833 sq. ft.
TOTAL: 833 sq. ft.
SIZES & DIMENSIONS ARE APPROXIMATE. ACTUAL MAY VARY.

SUITE C FLOOR PLAN



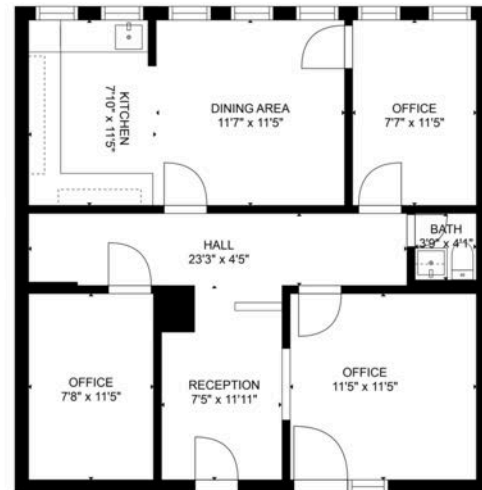
GROSS INTERNAL AREA
FLOOR 1: 776 sq. ft.
TOTAL: 776 sq. ft.
SIZES & DIMENSIONS ARE APPROXIMATE. ACTUAL MAY VARY.

SUITE G FLOOR PLAN



GROSS INTERNAL AREA
FLOOR 1: 771 sq. ft.
TOTAL: 771 sq. ft.
SIZES & DIMENSIONS ARE APPROXIMATE. ACTUAL MAY VARY.

SUITE I FLOOR PLAN



GROSS INTERNAL AREA
FLOOR 1: 777 sq. ft.
TOTAL: 777 sq. ft.
SIZES & DIMENSIONS ARE APPROXIMATE. ACTUAL MAY VARY.