

OFFICE SPACE

Approx 1,077 sf
For Lease

15 Cypress St, Suite 200
Newton, MA



S
P
A
C
E

F
O
R

L
E
A
S
E

AVAILABLE (APPROX SF):

1,077 sf - Second Floor Space

USES:

Professional Office Use

OFFERED FOR LEASE:

\$2,500/mo plus expenses

NEARBY TENANTS: Vaiani & Clarke Salon, Bella Nails and Spa, Sweet Tomatoes Pizza, Cafe Sol Azteca, Johnny's Luncheonette, Blackbird Doughnuts, JP Licks, Chase Bank, and much more.

The information contained herein has been obtained through sources deemed reliable by JMJ Commercial Realty, Inc., but cannot be guaranteed for its accuracy. We recommend to the tenant that any information, which is of special interest, should be obtained through independent verification.

LOCATION:

15 Cypress St is located at the entrance of Newton Centre with public transit in walking distance.

SUMMARY:

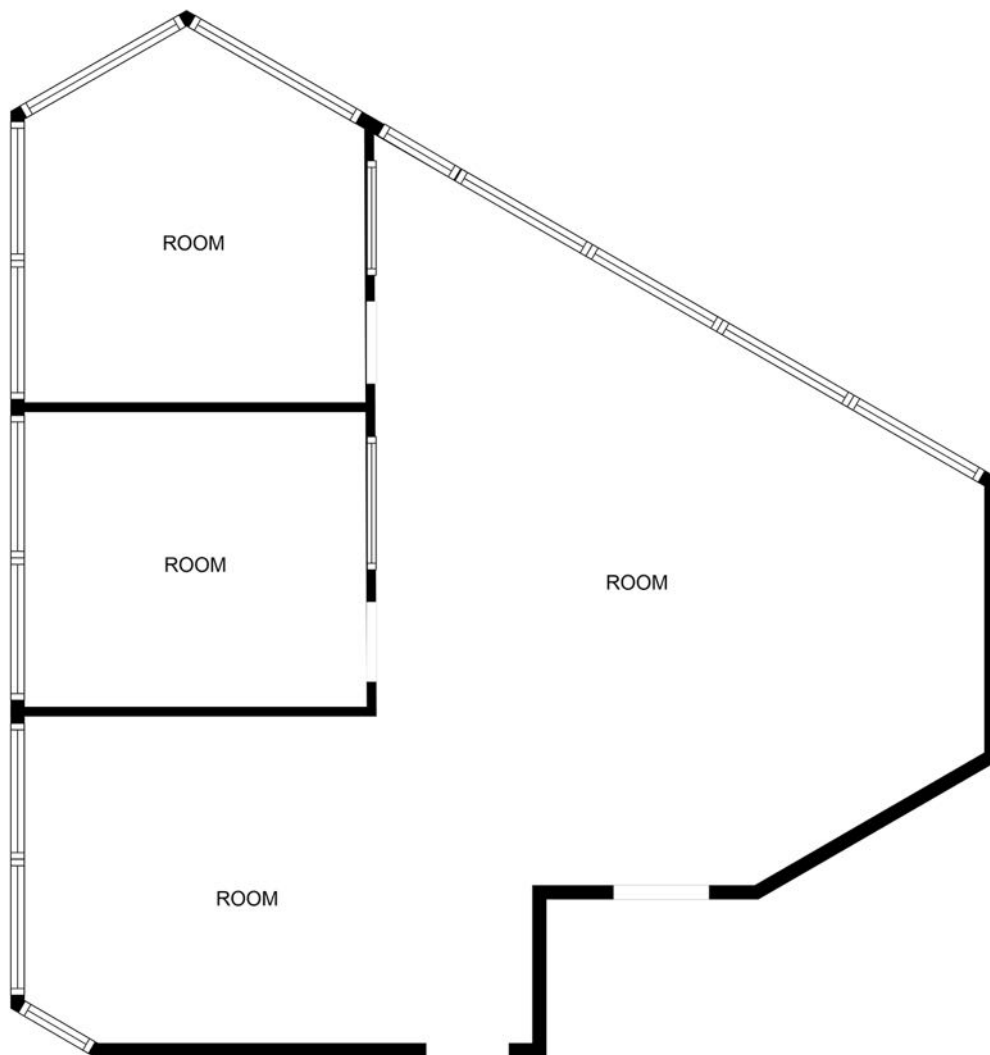
Spacious and bright 2nd floor office suite in Newton Centre. Features private offices as well as collaborative open workspace area. Excellent location and walking distance to Newton Centre shops, restaurants and public transportation. Call for more information!



JMJ Commercial Realty
935 Great Plain Avenue #261
Needham, MA 02492
www.jmj-cre.com

Josh Seadia
Principal
617-605-5674
josh@jmj-cre.com

FLOOR PLAN - 2ND FLOOR SUITE



MEASUREMENTS ARE CALCULATED BY CUBICASA TECHNOLOGY. DEEMED HIGHLY RELIABLE BUT NOT GUARANTEED.

The information contained herein has been obtained through sources deemed reliable by JMJ Commercial Realty, Inc., but cannot be guaranteed for its accuracy. We recommend to the tenant that any information, which is of special interest, should be obtained through independent verification.



JMJ Commercial Realty
935 Great Plain Avenue #261
Needham, MA 02492
www.jmj-cre.com

Josh Seadia
Principal
617-605-5674
josh@jmj-cre.com