

OFFICE

450 SF
For Lease

15 Cypress St Suite 201
Newton, MA



AVAILABLE (approx sf):

450

USES:

Office

OFFERED FOR LEASE:

\$1100/mo

NEARBY TENANTS: Tatte Bakery & Cafe, The UPS Store, House Of Tandoor, Tous Les Jours, Sherwin-Williams

LOCATION: Located in the heart of Newton Centre, close to public parking and the MBTA Green Line, with convenient access to Routes 9, 16, and Interstate 95.

SUMMARY: Bright and functional 450 SF office suite available at 15 Cypress Street in Newton Centre. Featuring three private rooms, this space is well suited for attorneys, accountants, therapists, consultants, and other professional users. Enjoy a highly walkable location with easy access to the Green Line, nearby amenities, and ample parking options, all within a thriving business and retail district.

The information contained herein has been obtained through sources deemed reliable by JMJ Commercial Realty, Inc., but cannot be guaranteed for its accuracy. We recommend to the tenant that any information, which is of special interest, should be obtained through independent verification.



JMJ Commercial Realty
935 Great Plain Avenue #261
Needham, MA 02492
www.jmj-cre.com

Adam Schertzer
Advisor
781-244-3061
adam@jmj-cre.com

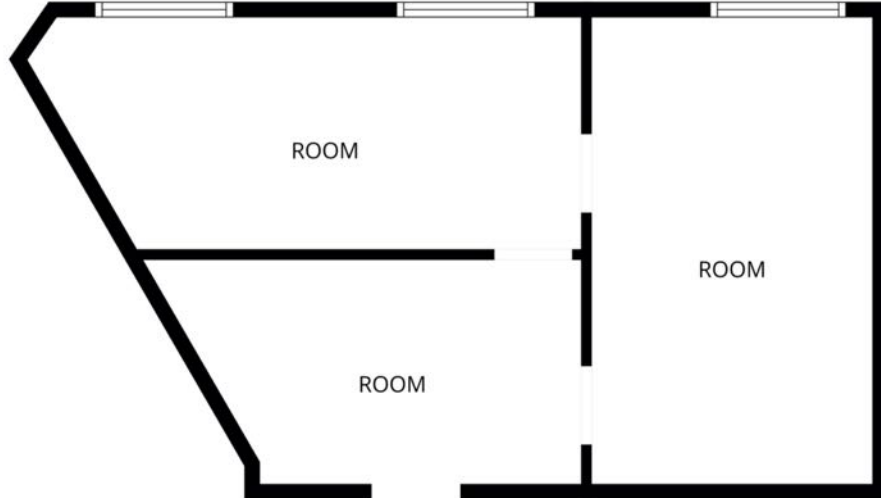
S
P
A
C
E

F
O
R

L
E
A
S
E

450 sf of OFFICE - 15 Cypress St Suite 201 Newton, MA

PROPERTY PHOTOS



FLOOR PLAN CREATED BY CURICASA APP. MEASUREMENTS DEEMED HIGHLY RELIABLE BUT NOT GUARANTEED.

The information contained herein has been obtained through sources deemed reliable by JMJ Commercial Realty, Inc., but cannot be guaranteed for its accuracy. We recommend to the tenant that any information, which is of special interest, should be obtained through independent verification.



JMJ Commercial Realty
935 Great Plain Avenue #261
Needham, MA 02492
www.jmj-cre.com

Adam Schertzer
Advisor
781-244-3061
adam@jmj-cre.com