

# OFFICE SUITES

From 1,360-1,560 sf (3 suites available)  
For Lease

182 West Central St  
Natick, MA



**AVAILABLE (APPROX SF WITH COMMON AREAS):**

- 1,360 sf - Suite 201
- 1,574 sf - Suite 203
- 1,560 sf - Suite 302

**USES:**

Office Use (including medical office)

**OFFERED FOR LEASE:**

Offered at \$20/sf plus expenses

**NEARBY TENANTS:** Roche Bros, CVS, Planet Fitness, Natick Mall, Shoppers World and more!

The information contained herein has been obtained through sources deemed reliable by JMJ Commercial Realty, Inc., but cannot be guaranteed for its accuracy. We recommend to the tenant that any information, which is of special interest, should be obtained through independent verification.

**LOCATION:**

182 West Central St is conveniently located on Route 135, minutes away from Routes 9, 27 and I-90 (Mass Pike) as well as public transportation.

**SUMMARY:**

Three professional sun-filled office suites available for lease in Natick. Features ample parking, elevator building, with mix of medical and general office tenants. Conveniently located and walking distance to public transportation, as well as a short drive to major routes and shopping areas. Call for more information!

S  
P  
A  
C  
E  
  
F  
O  
R  
  
L  
E  
A  
S  
E



**JMJ Commercial Realty**  
935 Great Plain Avenue #261  
Needham, MA 02492  
[www.jmj-cre.com](http://www.jmj-cre.com)

**Josh Seadia**  
Principal  
617-605-5674  
[josh@jmj-cre.com](mailto:josh@jmj-cre.com)

# Three Office Suites for Lease - 182 West Central St, Natick MA

## PROPERTY PHOTOS

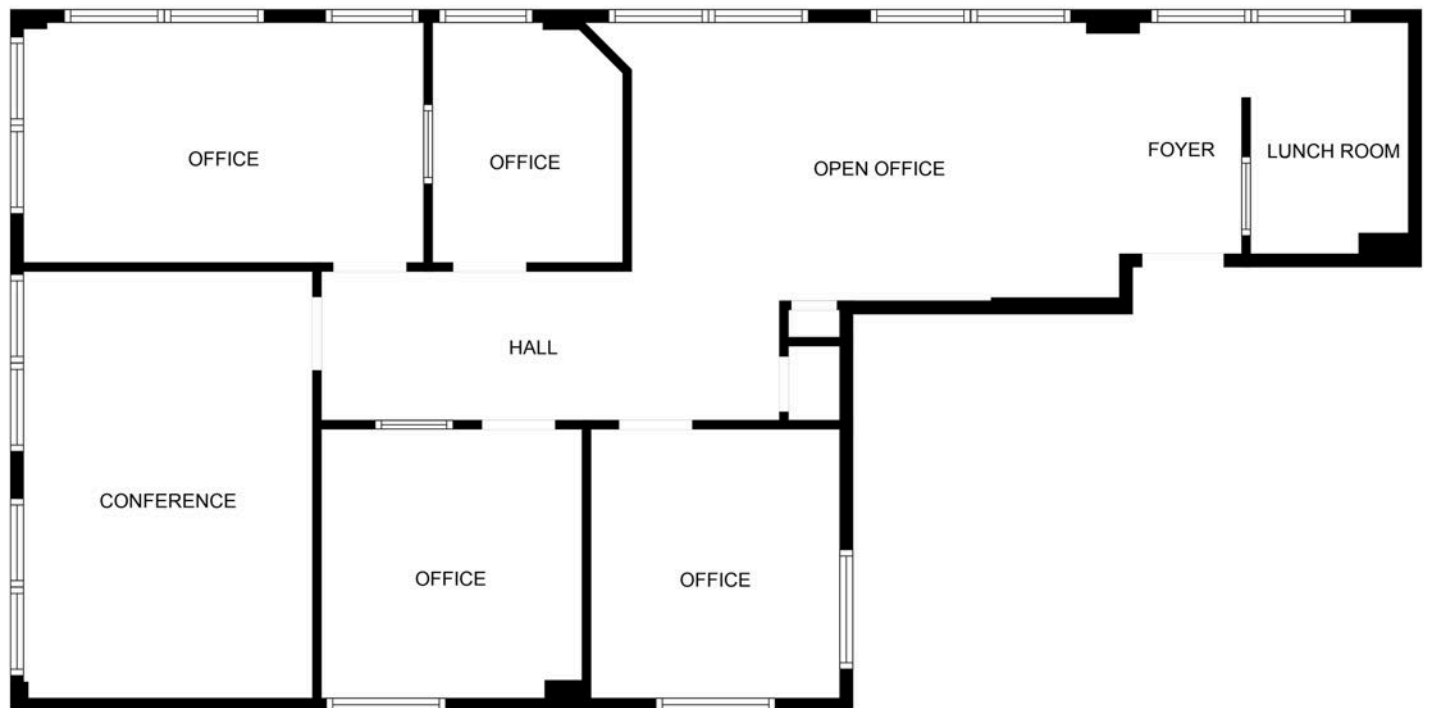


**JMJ Commercial Realty**  
935 Great Plain Avenue #261  
Needham, MA 02494  
[www.jmj-cre.com](http://www.jmj-cre.com)

**Josh Seadia**  
Principal  
617-605-5674  
[josh@jmj-cre.com](mailto:josh@jmj-cre.com)

# Three Office Suites for Lease - 182 West Central St, Natick MA

## FLOOR PLAN - SUITE 201 (2ND FLOOR)



MEASUREMENTS ARE CALCULATED BY CUBICASA TECHNOLOGY. DEEMED HIGHLY RELIABLE BUT NOT GUARANTEED.

The information contained herein has been obtained through sources deemed reliable by JMJ Commercial Realty, Inc., but cannot be guaranteed for its accuracy. We recommend to the tenant that any information, which is of special interest, should be obtained through independent verification.

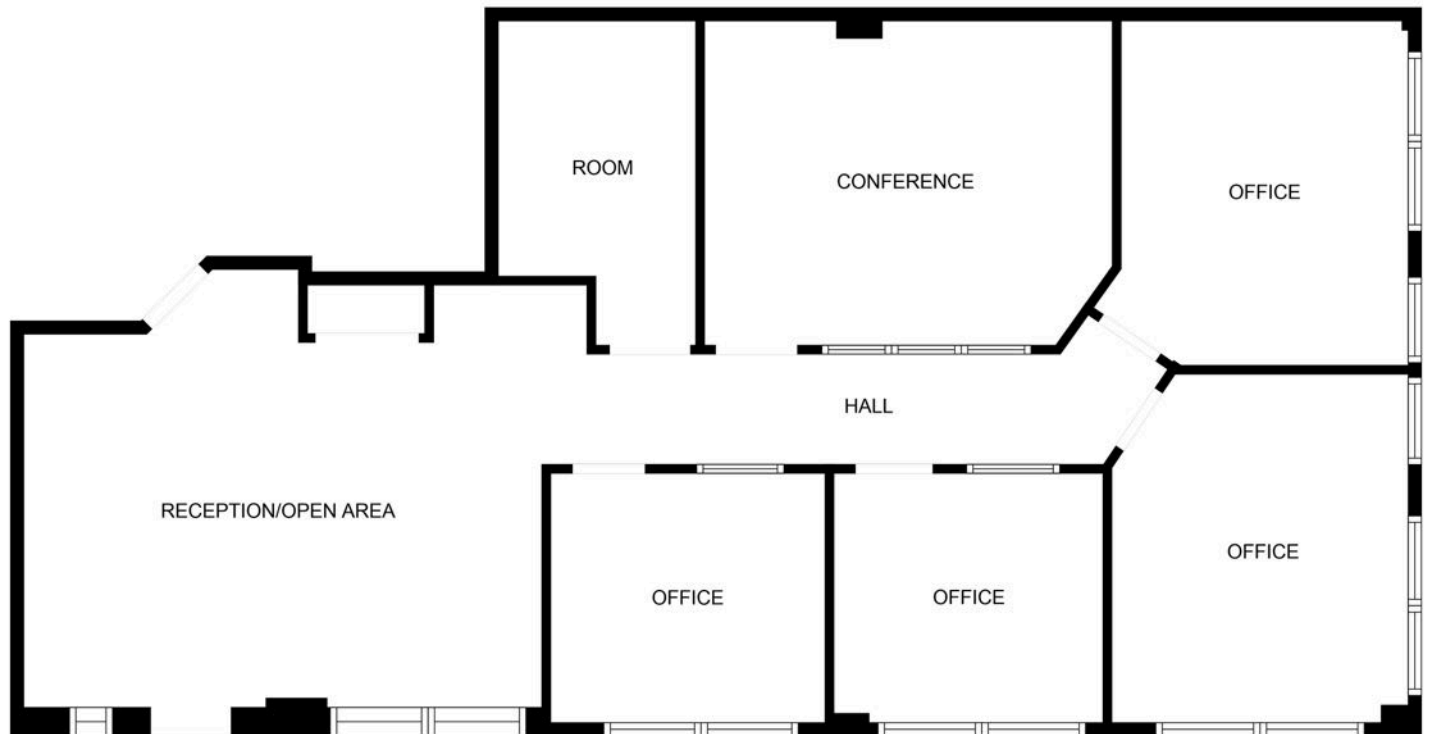


**JMJ Commercial Realty**  
935 Great Plain Avenue #261  
Needham, MA 02492  
[www.jmj-cre.com](http://www.jmj-cre.com)

**Josh Seadia**  
Principal  
617-605-5674  
[josh@jnj-cre.com](mailto:josh@jnj-cre.com)

# Three Office Suites for Lease - 182 West Central St, Natick MA

## FLOOR PLAN - SUITE 203 (2ND FLOOR)



MEASUREMENTS ARE CALCULATED BY CUBICASA TECHNOLOGY. DEEMED HIGHLY RELIABLE BUT NOT GUARANTEED.

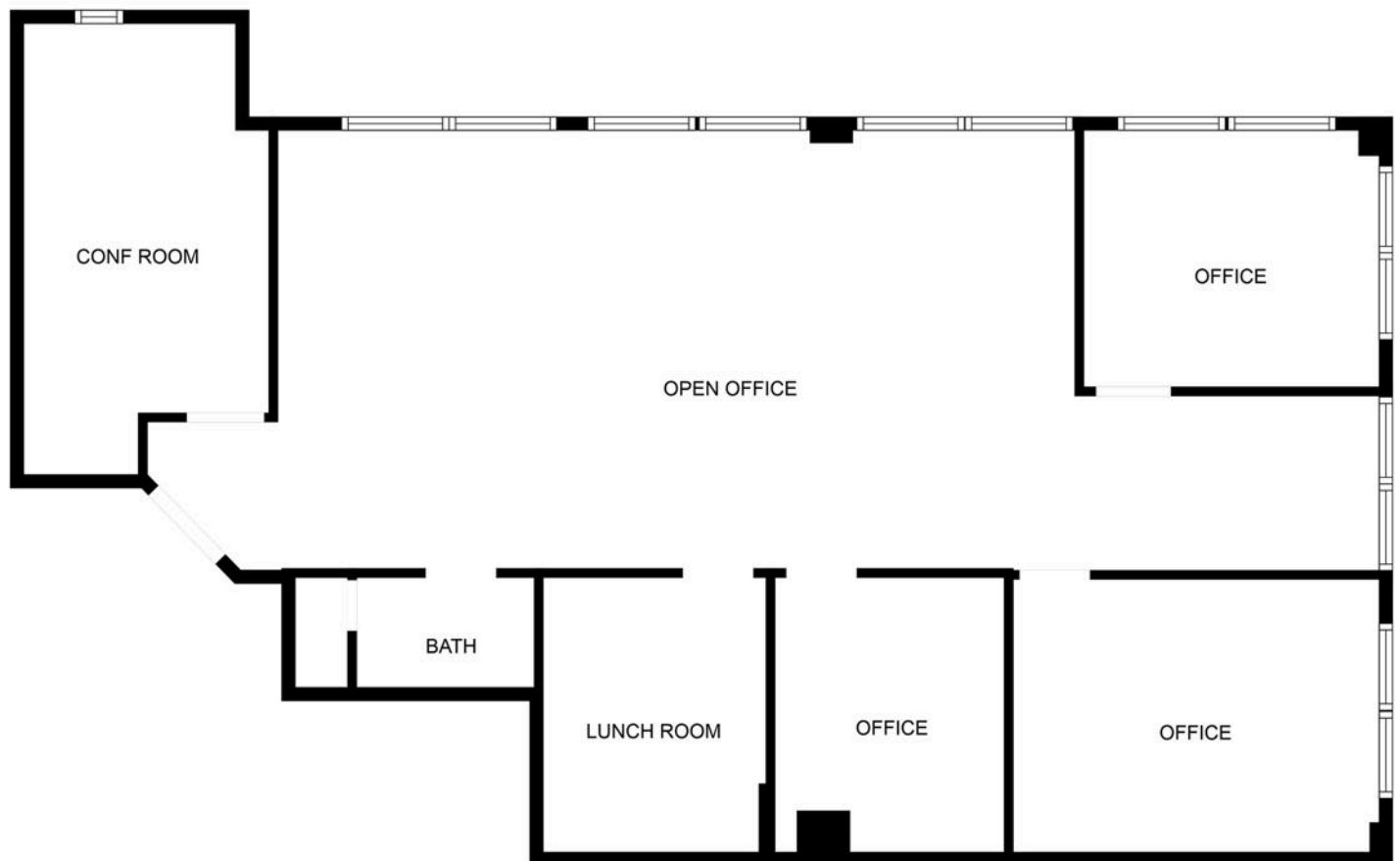
The information contained herein has been obtained through sources deemed reliable by JMJ Commercial Realty, Inc., but cannot be guaranteed for its accuracy. We recommend to the tenant that any information, which is of special interest, should be obtained through independent verification.



**JMJ Commercial Realty**  
935 Great Plain Avenue #261  
Needham, MA 02492  
[www.jmj-cre.com](http://www.jmj-cre.com)

**Josh Seadia**  
Principal  
617-605-5674  
[josh@jmj-cre.com](mailto:josh@jmj-cre.com)

## FLOOR PLAN - SUITE 302 (3RD FLOOR)



MEASUREMENTS ARE CALCULATED BY CUBICASA TECHNOLOGY. DEEMED HIGHLY RELIABLE BUT NOT GUARANTEED.

The information contained herein has been obtained through sources deemed reliable by JMJ Commercial Realty, Inc., but cannot be guaranteed for its accuracy. We recommend to the tenant that any information, which is of special interest, should be obtained through independent verification.



**JMJ Commercial Realty**  
935 Great Plain Avenue #261  
Needham, MA 02492  
[www.jmj-cre.com](http://www.jmj-cre.com)

**Josh Seadia**  
Principal  
617-605-5674  
[josh@jmj-cre.com](mailto:josh@jmj-cre.com)