

RETAIL SPACE

Approx 1,400 sf
For Lease

321 Broadway
Somerville, MA



S
P
A
C
E

F
O
R

L
E
A
S
E

AVAILABLE (APPROX SF):

1,400 sf - 1st Floor Space

USES:

Retail Space

OFFERED FOR LEASE:

\$30/sf + utilities

NEARBY TENANTS: The Run RX, City Nails, Fernanda's Beauty Salon, Winter Hill Brewing, Citizens Bank, Walgreens, as well as minutes away from the shops at Assembly Row.

The information contained herein has been obtained through sources deemed reliable by JMJ Commercial Realty, Inc., but cannot be guaranteed for its accuracy. We recommend to the tenant that any information, which is of special interest, should be obtained through independent verification.

LOCATION:

321 Broadway in Somerville is conveniently located minutes away from Route 93.

SUMMARY:

First floor renovated retail space for lease. Ideal for fitness/wellness use, with nail, beauty salon and pilates as neighboring tenants in the building. Private parking area for employees, as well as a separate lot for customers. Located in the Winter Hill area of Somerville with residential tenants above, and nearby Assembly Row. Call for more information!

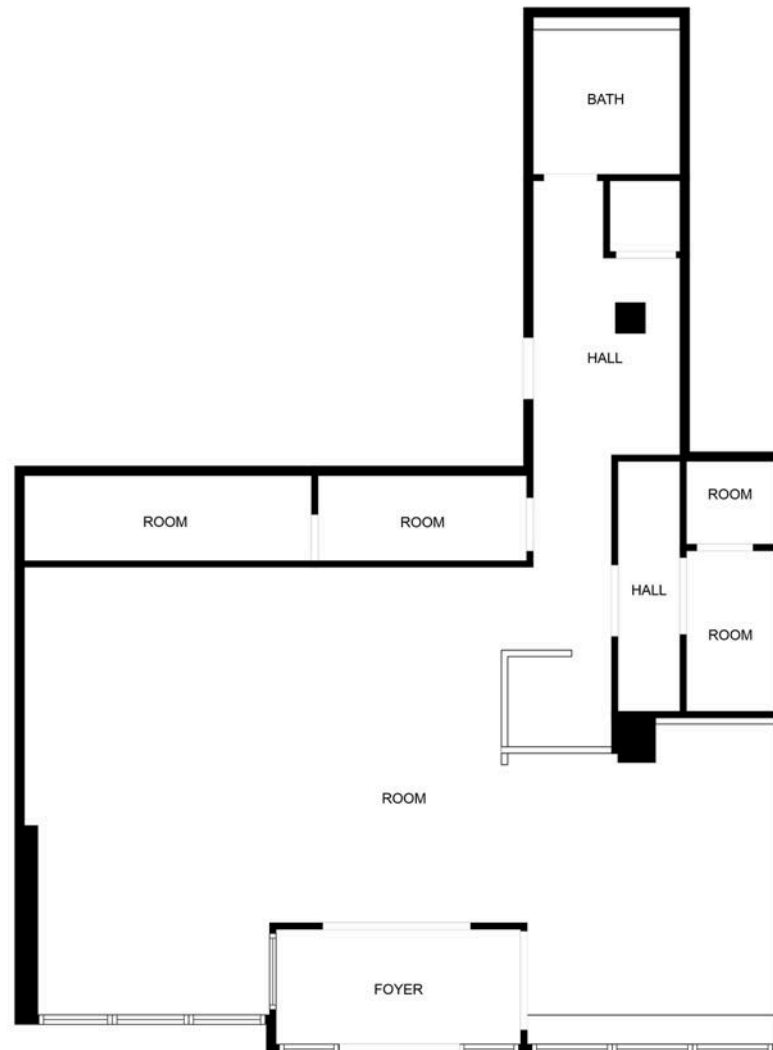


JMJ Commercial Realty
935 Great Plain Avenue #261
Needham, MA 02492
www.jmj-cre.com

Josh Seadia
Principal
617-605-5674
josh@jmj-cre.com

Approx 1,400 sf Retail Space for Lease - 321 Broadway, Somerville MA

FLOOR PLAN - 1ST FLOOR SUITE



FLOOR PLAN CREATED BY CUBICASA APP. MEASUREMENTS DEEMED HIGHLY RELIABLE BUT NOT GUARANTEED.

The information contained herein has been obtained through sources deemed reliable by JMJ Commercial Realty, Inc., but cannot be guaranteed for its accuracy. We recommend to the tenant that any information, which is of special interest, should be obtained through independent verification.



JMJ Commercial Realty
935 Great Plain Avenue #261
Needham, MA 02492
www.jmj-cre.com

Josh Seadia
Principal
617-605-5674
josh@jnj-cre.com