

MEDICAL OFFICE SPACE

2 Medical Suites (Approx 767 sf and 742 sf)
For Lease

32 South St
Waltham, MA



AVAILABLE (APPROX SF):

767 sf - Suite 205: First Floor Space
742 sf - Suite 101: Lower Level Space

USES:

Medical or Professional Office Use

OFFERED FOR LEASE:

First Floor Suite - \$1,500/mo plus expenses
Lower Level Suite - \$1,200/mo plus expenses

NEARBY TENANTS: Boston Children's Waltham,
AFC Urgent Care, Walgreens, Panera and more.

The information contained herein has been obtained through sources deemed reliable by JMJ Commercial Realty, Inc., but cannot be guaranteed for its accuracy. We recommend to the tenant that any information, which is of special interest, should be obtained through independent verification.

LOCATION:

32 South St is conveniently located off of Route 20

SUMMARY:

Two medical suites available for lease at the Doctors Office Building in Waltham. Each unit contains reception area with multiple private offices, along with open parking at the property. Close to Route 20, 95/128 and the Mass Pike, as well as near public transportation. Ideal for medical use, but potential for professional office users as well. Affordable pricing for your business needs. Call for more information!

S P A C E F O R L E A S E

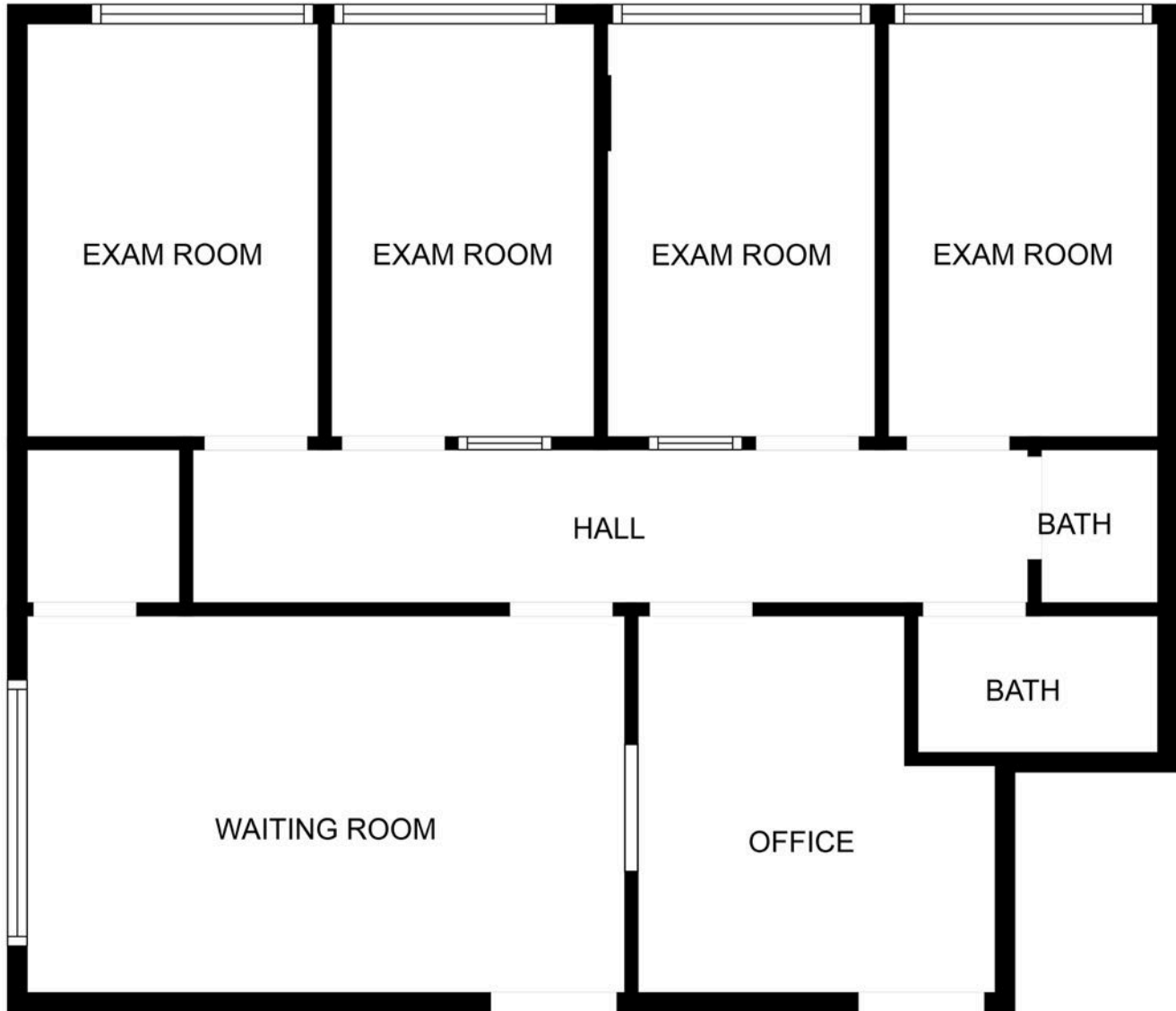


JMJ Commercial Realty
935 Great Plain Avenue #261
Needham, MA 02492
www.jmj-cre.com

Josh Seadia
Principal
617-605-5674
josh@jmj-cre.com

Approx 767 sf Medical Office Suite for Lease - 32 South St, Waltham

FLOOR PLAN - SUITE: 205: 1ST FLOOR SUITE



FLOOR PLAN CREATED BY CUBICASA APP. MEASUREMENTS DEEMED HIGHLY RELIABLE BUT NOT GUARANTEED.

The information contained herein has been obtained through sources deemed reliable by JMJ Commercial Realty, Inc., but cannot be guaranteed for its accuracy. We recommend to the tenant that any information, which is of special interest, should be obtained through independent verification.

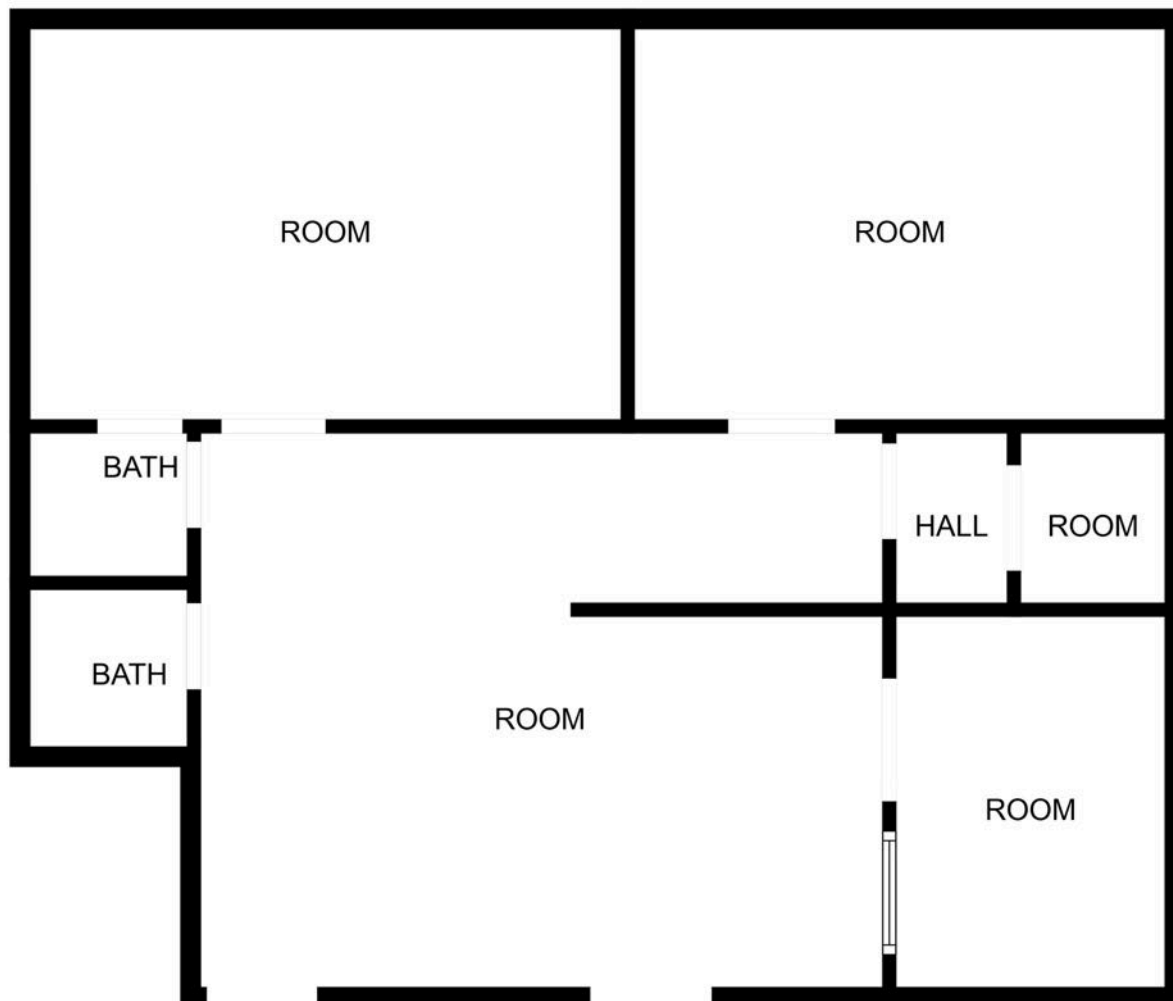


JMJ Commercial Realty
935 Great Plain Avenue #261
Needham, MA 02492
www.jmj-cre.com

Josh Seadia
Principal
617-605-5674
josh@jmj-cre.com

Approx 742 sf Medical Office Suite for Lease - 32 South St, Waltham

FLOOR PLAN - SUITE 101: LOWER LEVEL SUITE



FLOOR PLAN CREATED BY CUBICASA APP. MEASUREMENTS DEEMED HIGHLY RELIABLE BUT NOT GUARANTEED.

The information contained herein has been obtained through sources deemed reliable by JMJ Commercial Realty, Inc., but cannot be guaranteed for its accuracy. We recommend to the tenant that any information, which is of special interest, should be obtained through independent verification.



JMJ Commercial Realty
935 Great Plain Avenue #261
Needham, MA 02492
www.jmj-cre.com

Josh Seadia
Principal
617-605-5674
josh@jmj-cre.com