

MEDICAL OFFICE SPACE

560 sf and 180 sf
For Lease

32 South St
Waltham, MA



S
P
A
C
E

F
O
R

L
E
A
S
E

AVAILABLE (APPROX SF):

Suite 201A - 560 sf
Suite 301A - 180 sf (storage)

USES:

Medical or Professional Office Use

OFFERED FOR LEASE:

Suite 201A - \$1,500/mo plus expenses
Suite 301A - \$450/mo

NEARBY TENANTS: Boston Children's Waltham, AFC Urgent Care, Walgreens, Panera and more.

LOCATION:

32 South St is conveniently located off of Route 20

SUMMARY:

One medical suites and one storage space available for lease at the Doctors Office Building in Waltham. Suite 201A contains a reception area with multiple private offices, along with open parking at the property. Suite 301A is perfect for storage or a business address. Close to Route 20, 95/128 and the Mass Pike, as well as near public transportation. Ideal for medical use, but potential for professional office users as well. Affordable pricing for your business needs. Call for more information!

The information contained herein has been obtained through sources deemed reliable by JMJ Commercial Realty, Inc., but cannot be guaranteed for its accuracy. We recommend to the tenant that any information, which is of special interest, should be obtained through independent verification.

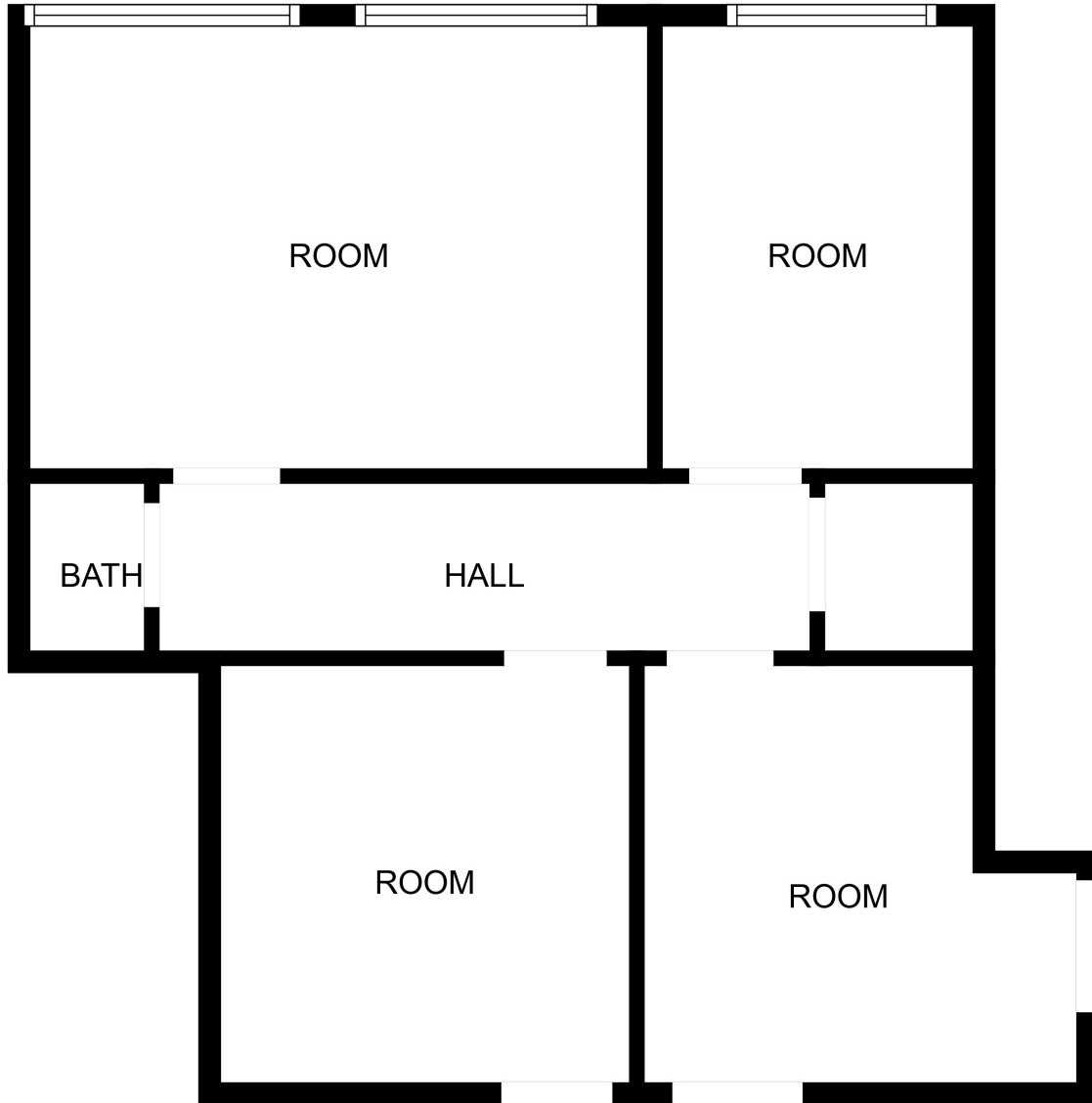


JMJ Commercial Realty
935 Great Plain Avenue #261
Needham, MA 02492
www.jmj-cre.com

Josh Seadia
Principal
617-605-5674
josh@jmj-cre.com

Approx 560 sf Medical Office Suite for Lease: 32 South St, Waltham

FLOOR PLAN - SUITE: 201-A: 1ST FLOOR



FLOOR PLAN CREATED BY CUBICASA APP. MEASUREMENTS DEEMED HIGHLY RELIABLE BUT NOT GUARANTEED.

The information contained herein has been obtained through sources deemed reliable by JMJ Commercial Realty, Inc., but cannot be guaranteed for its accuracy. We recommend to the tenant that any information, which is of special interest, should be obtained through independent verification.



JMJ Commercial Realty
935 Great Plain Avenue #261
Needham, MA 02492
www.jmj-cre.com

Josh Seadia
Principal
617-605-5674
josh@jmj-cre.com