

OFFICE SUITE

Approx 1,101 sf
For Lease

35 Highland Circle, Suite 101
Needham, MA



AVAILABLE (APPROX SF):

1,101 sf

USES:

Office

FOR LEASE:

Asking: \$25/sf + expenses

NEARBY TENANTS:

Panera Bread, Staples, petco, Speedway, Spiga, Sheraton Boston Needham Hotel, Mandarin Cuisine, and much more.

The information contained herein has been obtained through sources deemed reliable by JMJ Commercial Realty, Inc., but cannot be guaranteed for its accuracy. We recommend to the tenant that any information, which is of special interest, should be obtained through independent verification.

LOCATION:

35 Highland Circle is conveniently located minutes away from Route 95/128.

SUMMARY:

Professional sun-filled office suite with multiple private offices, reception area, conference room for lease in Needham. Ideal for various office uses. Elevator building with parking. Conveniently located to Route 95/128, as well as nearby shops and businesses. Call for more information!

S
P
A
C
E

F
O
R

L
E
A
S
E

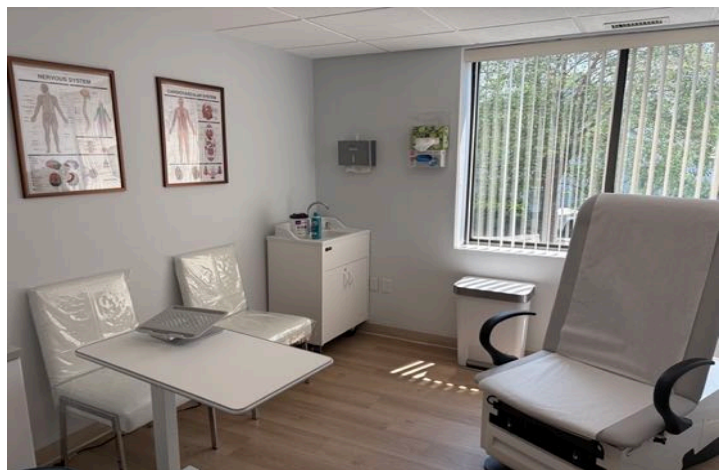
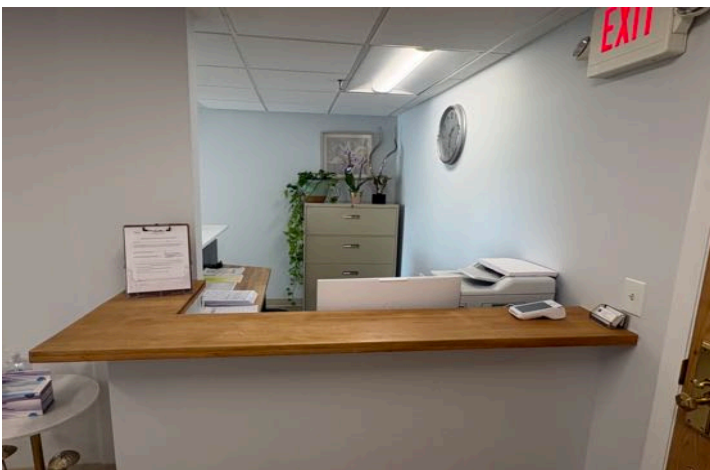


JMJ Commercial Realty
935 Great Plain Avenue #261
Needham, MA 02492
www.jmj-cre.com

Josh Seadia
Principal
617-605-5674
josh@jmj-cre.com

Office Suite for Lease - 35 Highland Circle, Suite 101, Needham, MA 02494

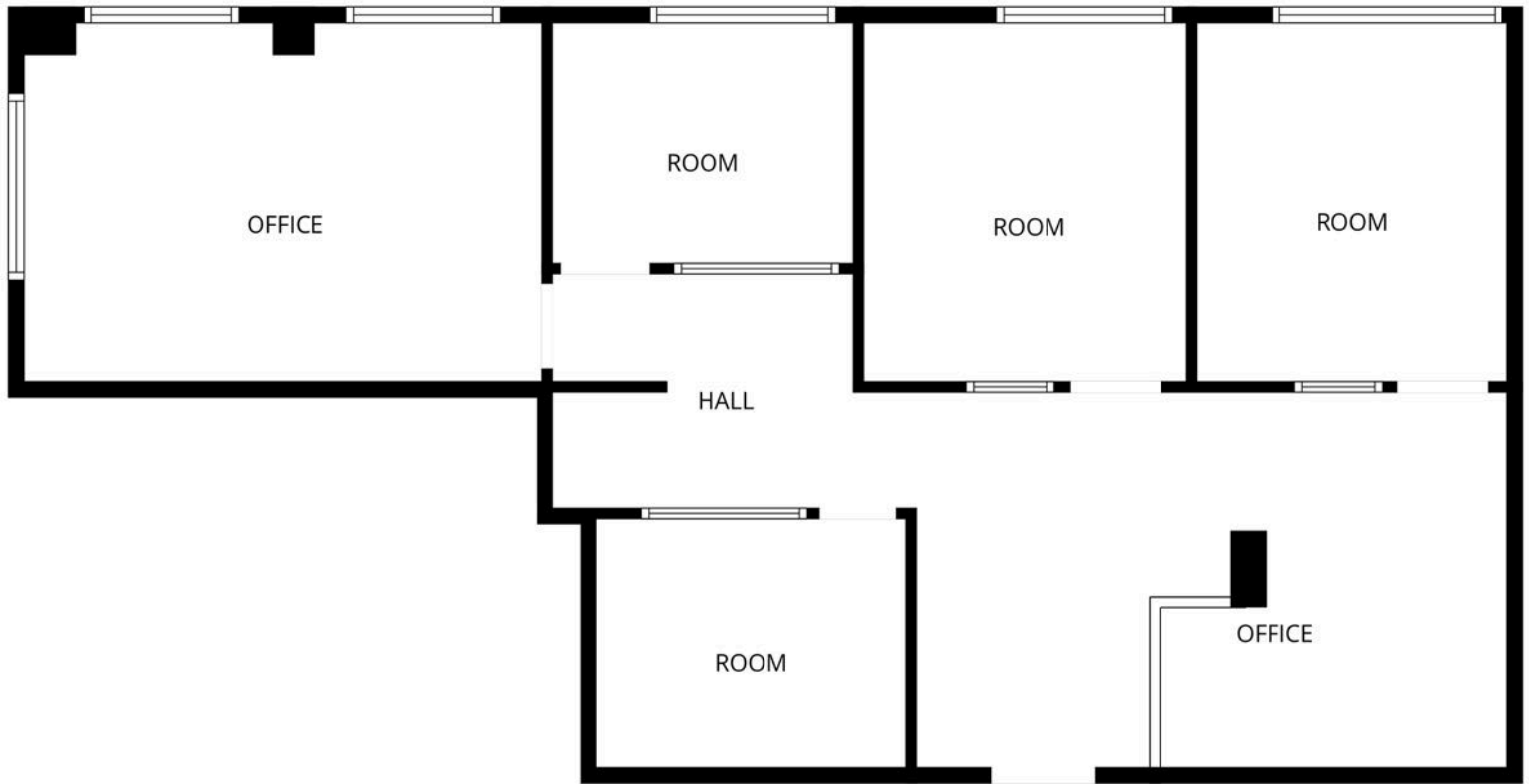
PROPERTY PHOTOS



JMJ Commercial Realty
935 Great Plain Avenue #261
Needham, MA 02492
www.jmj-cre.com

Josh Seadia
Principal
617-605-5674
josh@jmj-cre.com

SUITE 101 - FLOOR PLAN - APPROX 1,101 SF



FLOOR PLAN CREATED BY CUBICASA APP. MEASUREMENTS DEEMED HIGHLY RELIABLE BUT NOT GUARANTEED.

The information contained herein has been obtained through sources deemed reliable by JMJ Commercial Realty, Inc., but cannot be guaranteed for its accuracy. We recommend to the tenant that any information, which is of special interest, should be obtained through independent verification.



JMJ Commercial Realty
935 Great Plain Avenue #261
Needham, MA 02492
www.jmj-cre.com

Josh Seadia
Principal
617-605-5674
josh@jmj-cre.com