

OFFICE SUITES

From 300 sf to 1,400 sf +/- (3 suites available)
For Lease

475 Hillside Ave
Needham, MA



S
P
A
C
E

F
O
R

L
E
A
S
E

AVAILABLE (APPROX SF WITH COMMON AREAS):

- Suite 3: 1,400 sf +/- , \$2,950/mo
- Suite 5: 750 sf +/-, \$1,500/mo
- Suite 7: 300 sf +/-, \$750/mo

USES: Office Use

OFFERED FOR LEASE:

See above for suite pricing.

NEARBY TENANTS: Trader Joe's, Starbucks, CVS, USPS, Cafe Fresh Bagel, Town House of Pizza, Blue on Highland, Vinodivino, and much more!

The information contained herein has been obtained through sources deemed reliable by JMJ Commercial Realty, Inc., but cannot be guaranteed for its accuracy. We recommend to the tenant that any information, which is of special interest, should be obtained through independent verification.

LOCATION:

475 Hillside Ave is located in Needham Heights, walking distance to the commuter rail.

SUMMARY:

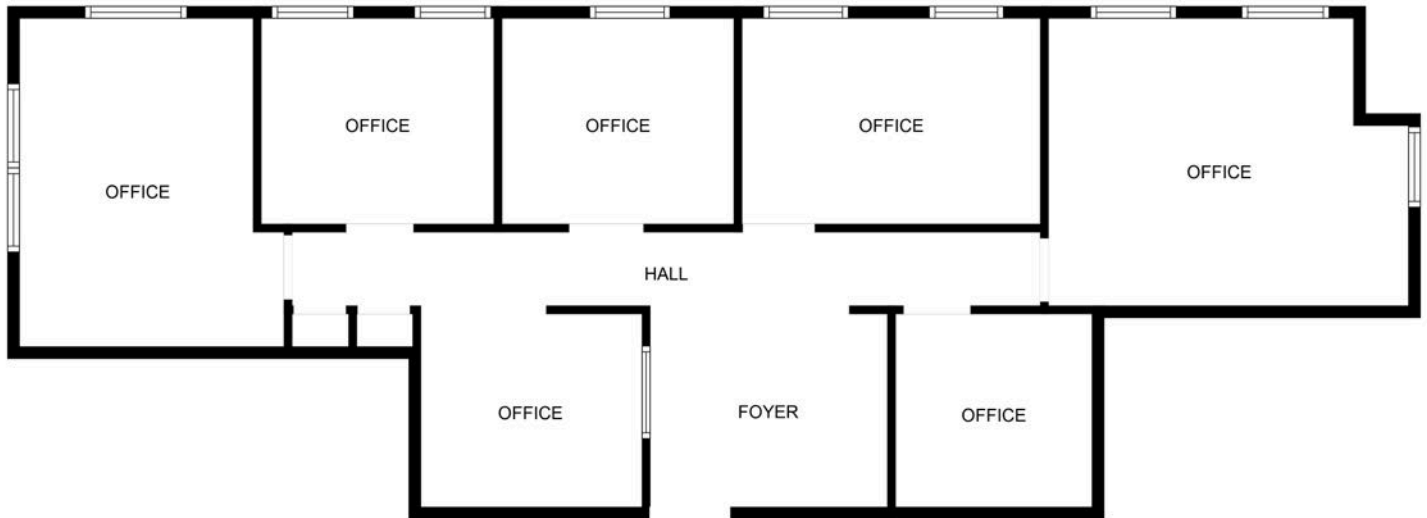
Three conveniently located office suites available for lease in Needham Heights. Walking distance to various restaurants, shops as well as the Needham Heights commuter rail station. Only minutes away from Route 95/128. Multiple size suites available ideal for professional office users. Parking available as well. Call for more information!



JMJ Commercial Realty
935 Great Plain Avenue #261
Needham, MA 02492
www.jmj-cre.com

Josh Seadia
Principal
617-605-5674
josh@jmj-cre.com

FLOOR PLAN - SUITE 3 (APPROX 1,400 SF +/-)



FLOOR PLAN CREATED BY CUBICASA APP. MEASUREMENTS DEEMED HIGHLY RELIABLE BUT NOT GUARANTEED.

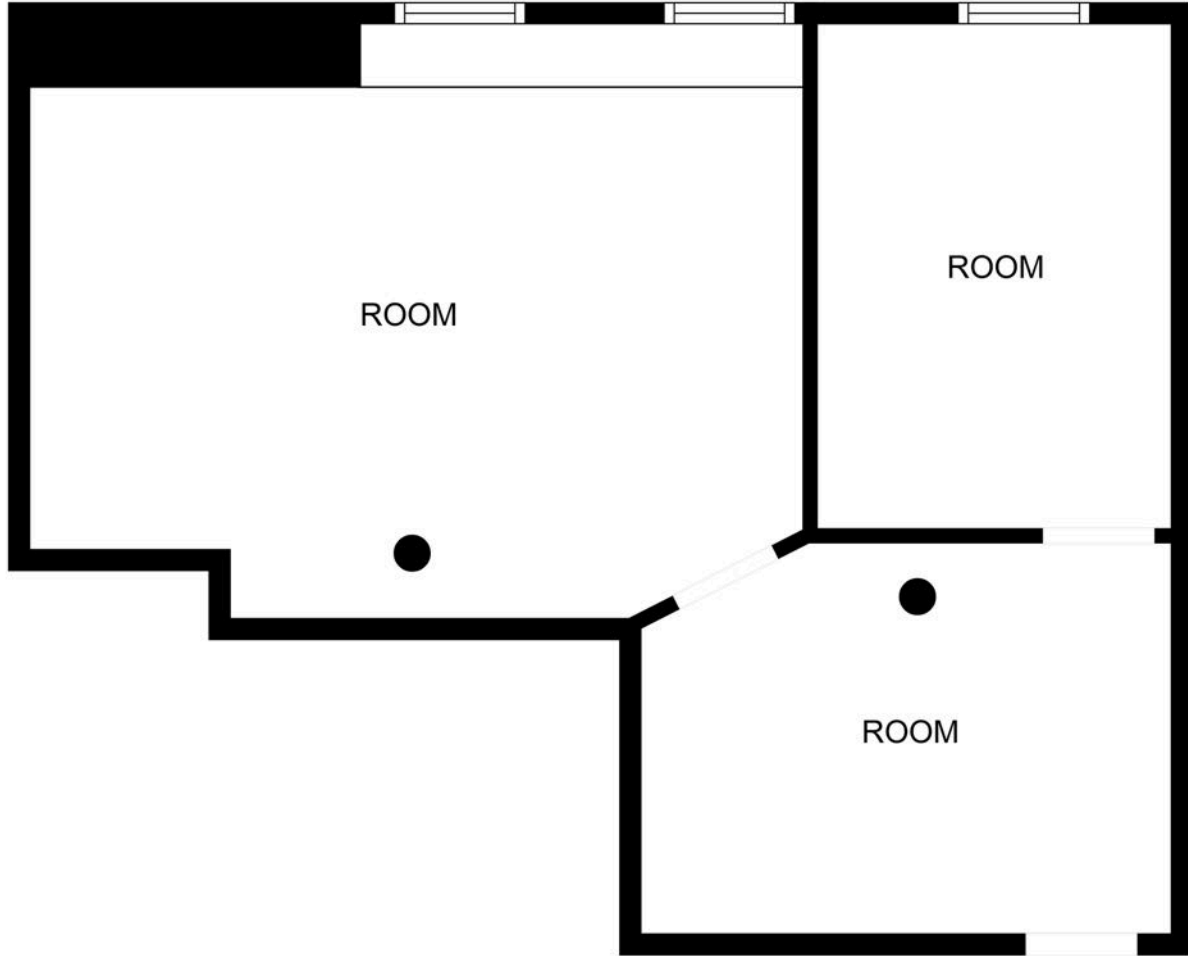
The information contained herein has been obtained through sources deemed reliable by JMJ Commercial Realty, Inc., but cannot be guaranteed for its accuracy. We recommend to the tenant that any information, which is of special interest, should be obtained through independent verification.



JMJ Commercial Realty
935 Great Plain Avenue #261
Needham, MA 02492
www.jmj-cre.com

Josh Seadia
Principal
617-605-5674
josh@jmj-cre.com

FLOOR PLAN - SUITE 5 (APPROX 750 SF +/-)



FLOOR PLAN CREATED BY CUBICASA APP. MEASUREMENTS DEEMED HIGHLY RELIABLE BUT NOT GUARANTEED.

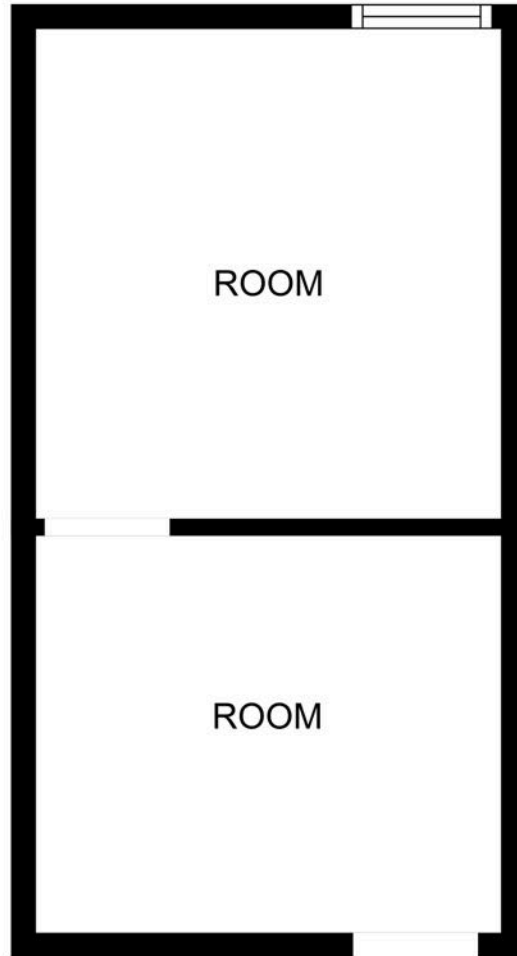
The information contained herein has been obtained through sources deemed reliable by JMJ Commercial Realty, Inc., but cannot be guaranteed for its accuracy. We recommend to the tenant that any information, which is of special interest, should be obtained through independent verification.



JMJ Commercial Realty
935 Great Plain Avenue #261
Needham, MA 02492
www.jmj-cre.com

Josh Seadia
Principal
617-605-5674
josh@jmj-cre.com

FLOOR PLAN - SUITE 7 (APPROX 300 SF +/-)



FLOOR PLAN CREATED BY CUBICASA APP. MEASUREMENTS DEEMED HIGHLY RELIABLE BUT NOT GUARANTEED.

The information contained herein has been obtained through sources deemed reliable by JMJ Commercial Realty, Inc., but cannot be guaranteed for its accuracy. We recommend to the tenant that any information, which is of special interest, should be obtained through independent verification.



JMJ Commercial Realty
935 Great Plain Avenue #261
Needham, MA 02492
www.jmj-cre.com

Josh Seadia
Principal
617-605-5674
josh@jmj-cre.com