

OFFICE SPACE

Approx 933 sf
For Lease

56 Kearney Rd,
Needham, MA



S
P
A
C
E

F
O
R

L
E
A
S
E

AVAILABLE (APPROX SF):

933 sf - First Floor Space

USES:

Professional Office Use

OFFERED FOR LEASE:

\$1,600/mo plus expenses

NEARBY TENANTS: Fitness Elite Training Center, Bin Ends, Mantra Computing, A to Z Childcare and Preschool, Baker's Best Catering, and more.

LOCATION:

56 Kearney Rd is conveniently located minutes away from Route 95/128.

SUMMARY:

First floor office suite for lease in Needham. Features 2 offices plus an open collaborative workspace area. Includes access to a shared kitchen and ample parking. Well located and near Route 95/128. Great space for accountant, attorney, or other professional office use. Call for more information!

The information contained herein has been obtained through sources deemed reliable by JMJ Commercial Realty, Inc., but cannot be guaranteed for its accuracy. We recommend to the tenant that any information, which is of special interest, should be obtained through independent verification.

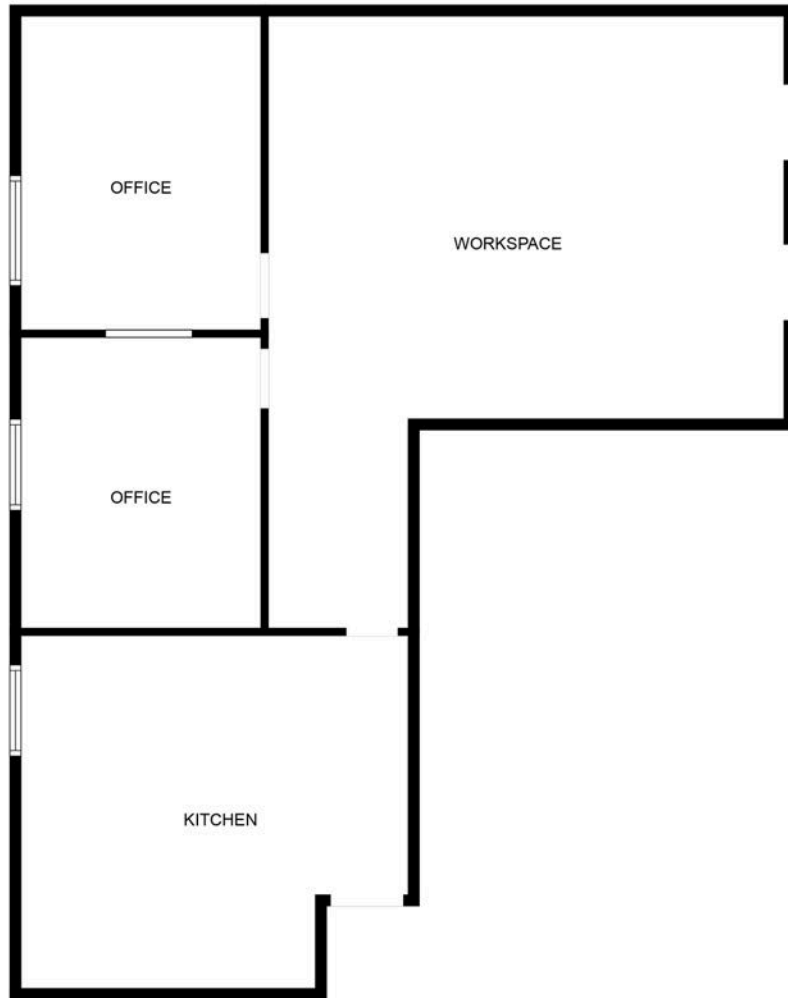


JMJ Commercial Realty
935 Great Plain Avenue #261
Needham, MA 02492
www.jmj-cre.com

Josh Seadia
Principal
617-605-5674
josh@jmj-cre.com

Approx 933 sf Office Suite for Lease - 15 Kearney Rd, First Floor, Needham

FLOOR PLAN - 1ST FLOOR SUITE



FLOOR PLAN CREATED BY CUBICASA APP. MEASUREMENTS DEEMED HIGHLY RELIABLE BUT NOT GUARANTEED.

The information contained herein has been obtained through sources deemed reliable by JMJ Commercial Realty, Inc., but cannot be guaranteed for its accuracy. We recommend to the tenant that any information, which is of special interest, should be obtained through independent verification.



JMJ Commercial Realty
935 Great Plain Avenue #261
Needham, MA 02492
www.jmj-cre.com

Josh Seadia
Principal
617-605-5674
josh@jnj-cre.com