

INDUSTRIAL SPACE

1,600 SF of Industrial/Office Space
For Lease

65 Cherry St
Ashland, MA



S
P
A
C
E

F
O
R

L
E
A
S
E

AVAILABLE (APPROX SF):

800 SF consisting of 3 garage bays
800 SF of 2nd floor office space

USES:

Industrial (garage bays) and office space.

OFFERED FOR LEASE:

\$2,795/mo plus expenses

NEARBY TENANTS:

Dunkin', USPS, Market Basket, McDonald's, as well as many local businesses.

The information contained herein has been obtained through sources deemed reliable by JMJ Commercial Realty, Inc., but cannot be guaranteed for its accuracy. We recommend to the tenant that any information, which is of special interest, should be obtained through independent verification.

LOCATION:

65 Cherry St is located in downtown Ashland, and close to Routes 9, 135, 126, I-90, I-95 and I-495. Walking distance to the Ashland MBTA commuter rail.

SUMMARY:

Terrific downtown Ashland location, featuring 3 garage bays and 2nd floor open office workspace for lease. Excellent space that would be ideal for a single tenant to occupy. Walking distance to restaurants and shops, as well as less than 1 mile away from the Ashland MBTA commuter rail.

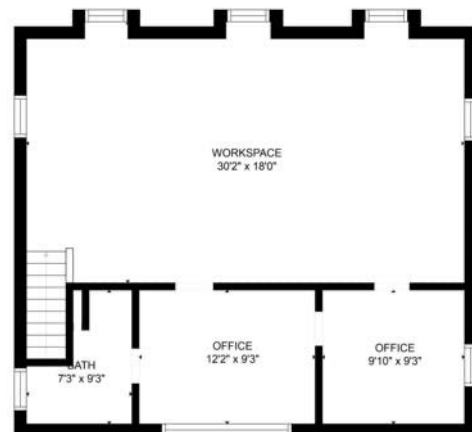
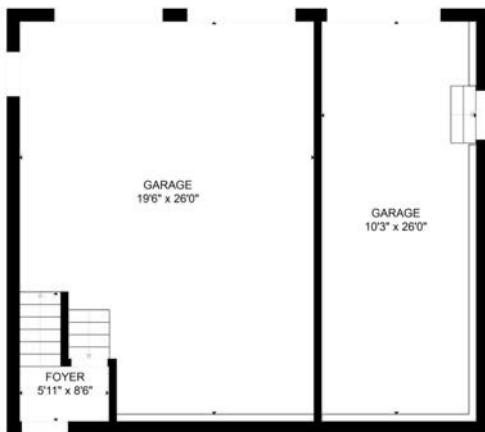


JMJ Commercial Realty
935 Great Plain Avenue #261
Needham, MA 02494
www.jmj-cre.com

Josh Seadia
Principal
617-605-5674
josh@jmj-cre.com

1,600 SF Industrial/Office Space for Lease - 65 Cherry St, Ashland MA

PROPERTY PHOTOS



Note: Photos displayed are from earlier tenant use at the property.



JMJ Commercial Realty
935 Great Plain Avenue #261
Needham, MA 02494
www.jmj-cre.com

Josh Seadia
Principal
617-605-5674
josh@jmj-cre.com