

INDUSTRIAL/FLEX SPACE

Up to 5,339 SF
For Lease

663 Lawrence St
Lowell, MA



S
P
A
C
E

F
O
R

L
E
A
S
E

AVAILABLE (approx sf):

Unit 203 - 980 sf
Unit 204 - 1383 sf
Unit 205 - 1357 sf
Unit 206 - 1619 sf

USES:

Storage, Light Manufacturing

OFFERED FOR LEASE:

\$12 sf (includes utilities - subject to use)

NEARBY TENANTS:

Umaco, College Hunks Movers, Boomer Baseball,
Oracle Fine Finishes, Triumph Barbell

The information contained herein has been obtained through sources deemed reliable by JMJ Commercial Realty, Inc., but cannot be guaranteed for its accuracy. We recommend to the tenant that any information, which is of special interest, should be obtained through independent verification.

LOCATION: Convenient access to major routes, including Interstate 495 and U.S. Route 3, making it easy for employees, customers, and deliveries.

SUMMARY:

Up to 5,339 sf across 4 contiguous units that can be leased separately or combined. Two of the units feature offices. All have roll up doors for easy loading in and out to the shared loading dock on this level. Perfect for trades looking for storage or light manufacturing.



JMJ Commercial Realty
935 Great Plain Avenue #261
Needham, MA 02492
www.jmj-cre.com

Adam Schertzer
Advisor
781-244-3061
adam@jmj-cre.com

Up to 5,339 sf of Industrial/Flex space - 663 Lawrence St Lowell, MA

PROPERTY PHOTOS



The information contained herein has been obtained through sources deemed reliable by JMJ Commercial Realty, Inc., but cannot be guaranteed for its accuracy. We recommend to the tenant that any information, which is of special interest, should be obtained through independent verification.

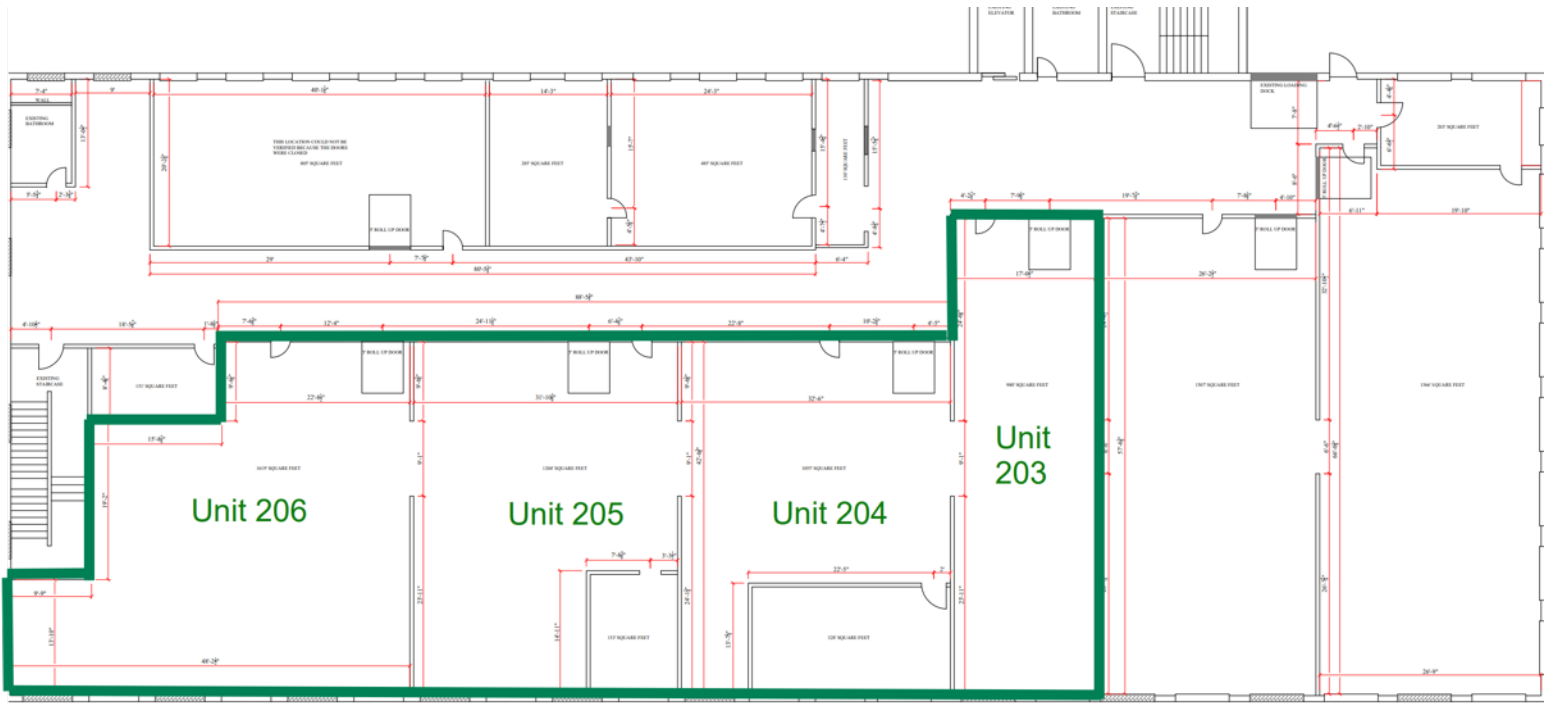


JMJ Commercial Realty
935 Great Plain Avenue #261
Needham, MA 02492
www.jmj-cre.com

Adam Schertzer
Advisor
781-244-3061
adam@jmj-cre.com

Up to 5,339 sf of Industrial/Flex space - 663 Lawrence St Lowell, MA

FLOOR PLAN



The information contained herein has been obtained through sources deemed reliable by JMJ Commercial Realty, Inc., but cannot be guaranteed for its accuracy. We recommend to the tenant that any information, which is of special interest, should be obtained through independent verification.



JMJ Commercial Realty
935 Great Plain Avenue #261
Needham, MA 02492
www.jmj-cre.com

Adam Schertzer
Advisor
781-244-3061
adam@jmj-cre.com