

OFFICE SPACE

Approx 1,023 sf
For Lease

69 Adams St
Newton, MA



S
P
A
C
E

F
O
R

L
E
A
S
E

AVAILABLE (APPROX SF):

1,023 sf - 2nd Floor Space

USES:

Office Use

OFFERED FOR LEASE:

Offered at \$2,500/mo plus expenses

NEARBY TENANTS: Dunkin', Whole Foods, Marriott Newton, Extra Space Storage, Swartz Ace Hardware, Greentail Table, Moldova and many other local businesses nearby.

The information contained herein has been obtained through sources deemed reliable by JMJ Commercial Realty, Inc., but cannot be guaranteed for its accuracy. We recommend to the tenant that any information, which is of special interest, should be obtained through independent verification.

LOCATION:

69 Adams St is located near Washington St with nearby access to the Mass Pike (I-90) and Route 95/128, as well as the Newtonville commuter rail.

SUMMARY:

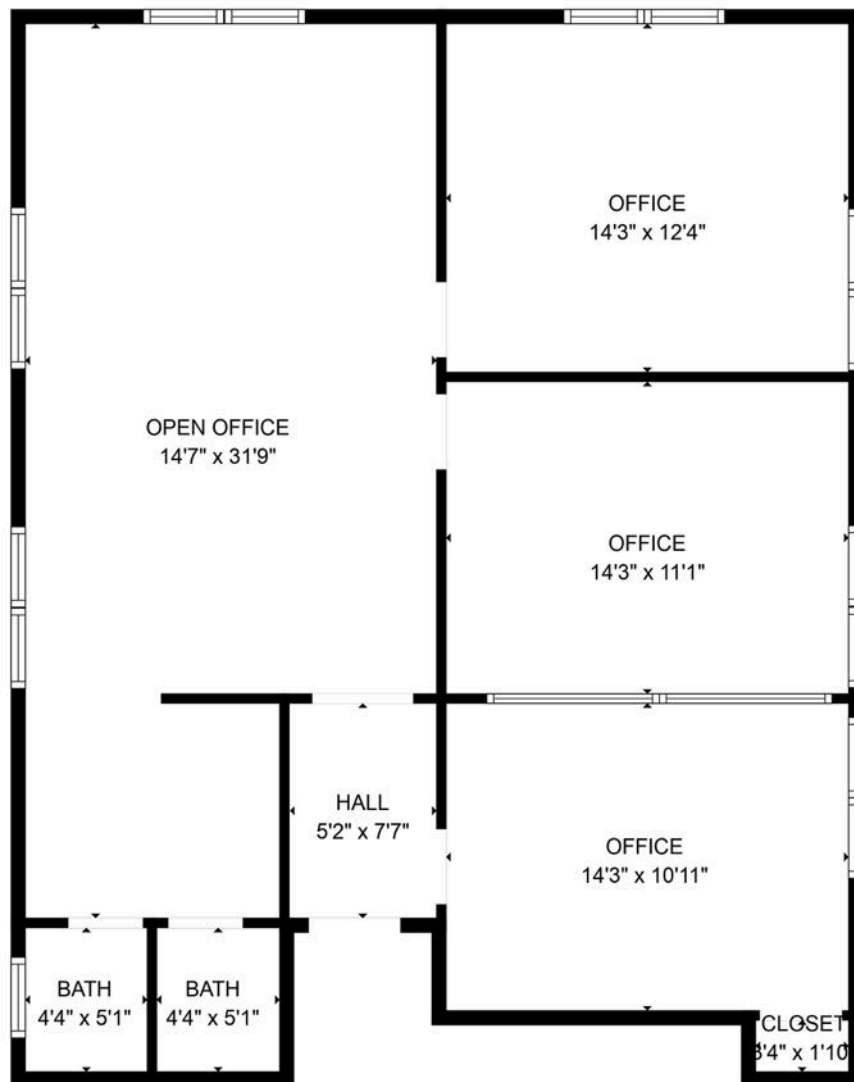
Bright, spacious, open workspace area including 3 separate offices and private 2 bathrooms for lease in Newton. Includes 3 parking spaces. Well located office space, minutes away from a large number of shops and restaurants including public transportation. Call for more information!



JMJ Commercial Realty
935 Great Plain Avenue #261
Needham, MA 02492
www.jmj-cre.com

Josh Seadia
Principal
617-605-5674
josh@jmj-cre.com

FLOOR PLAN - 2ND FLOOR SUITE



GROSS INTERNAL AREA
FLOOR 1: 1023 sq. ft
EXCLUDED AREAS: CLOSET: 6 sq. ft
TOTAL: 1023 sq. ft

MEASUREMENTS ARE CALCULATED BY CUBICASA TECHNOLOGY. DEEMED HIGHLY RELIABLE BUT NOT GUARANTEED.

The information contained herein has been obtained through sources deemed reliable by JMJ Commercial Realty, Inc., but cannot be guaranteed for its accuracy. We recommend to the tenant that any information, which is of special interest, should be obtained through independent verification.



JMJ Commercial Realty
935 Great Plain Avenue #261
Needham, MA 02492
www.jmj-cre.com

Josh Seadia
Principal
617-605-5674
josh@jmj-cre.com