

OFFICE SPACE

Approx 808 sf
For Lease

990 Great Plain Ave, Suite 27
Needham, MA



S
P
A
C
E

F
O
R

L
E
A
S
E

AVAILABLE (APPROX SF WITH COMMON AREAS):

808 sf - 2nd Floor Space

USES:

Professional Office Use

OFFERED FOR LEASE:

\$1,500/mo plus expenses

NEARBY TENANTS: barre3, Needham Bank, Middlesex Savings Bank, Walgreens, CVS, BIDMC, Hearth Pizzeria, Sweet Basil, Cook, The UPS Store, and many more shops and restaurants.

The information contained herein has been obtained through sources deemed reliable by JMJ Commercial Realty, Inc., but cannot be guaranteed for its accuracy. We recommend to the tenant that any information, which is of special interest, should be obtained through independent verification.

LOCATION:

990 Great Plain Ave is located in Needham Center, walking distance to the MBTA Commuter Rail.

SUMMARY:

Fantastic location in Needham Center! 2nd floor professional office suite formerly built out as a medical spa. Nicely renovated unit. Elevator in the building and across from Needham Town Hall. Lots of local shops and restaurants in walking distance. Minutes from Needham Center Commuter Rail. Excellent space for a variety of business uses. Call for more details!



JMJ Commercial Realty
935 Great Plain Avenue #261
Needham, MA 02492
www.jmj-cre.com

Josh Seadia
Principal
617-605-5674
josh@jmj-cre.com

Approx 808 sf Office Suite for Lease - 990 Great Plain Ave, Suite 27, Needham MA

INTERIOR PHOTO - 2ND FLOOR SUITE



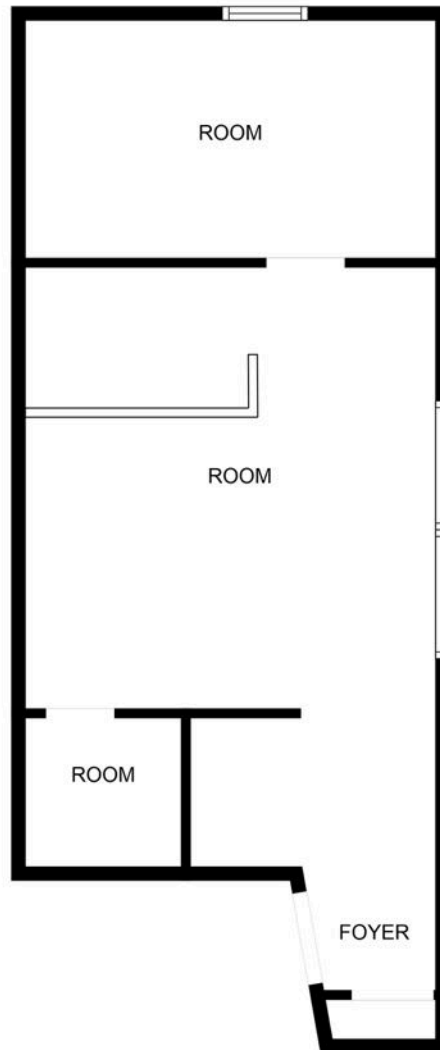
The information contained herein has been obtained through sources deemed reliable by JMJ Commercial Realty, Inc., but cannot be guaranteed for its accuracy. We recommend to the tenant that any information, which is of special interest, should be obtained through independent verification.



JMJ Commercial Realty
935 Great Plain Avenue #261
Needham, MA 02492
www.jmj-cre.com

Josh Seadia
Principal
617-605-5674
josh@jmj-cre.com

FLOOR PLAN - 2ND FLOOR SUITE



MEASUREMENTS ARE CALCULATED BY CUBICASA TECHNOLOGY. DEEMED HIGHLY RELIABLE BUT NOT GUARANTEED.

The information contained herein has been obtained through sources deemed reliable by JMJ Commercial Realty, Inc., but cannot be guaranteed for its accuracy. We recommend to the tenant that any information, which is of special interest, should be obtained through independent verification.



JMJ Commercial Realty
935 Great Plain Avenue #261
Needham, MA 02492
www.jmj-cre.com

Josh Seadia
Principal
617-605-5674
josh@jmj-cre.com